

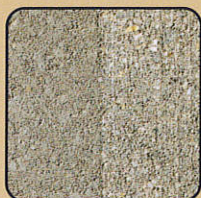
**EDCO****SCARIFIERS**

*Look at the surface-preparation jobs an EDCO Scarifier can do!*



### Clean

- Warehouse floors
- Manufacturing facilities
- Service bays



### Texture

- Prepare surfaces for better adhesion of coatings



### Level

- Sidewalk irregularities
- Uneven joints
- Bumps
- Uneven surfaces needing repair



### Groove

- Walkways
- Bridge decks
- Dairy barns
- Parking decks



### Remove

- Traffic lines
- Paint
- Coatings
- Ice
- Mortar
- Delaminated surfaces
- Contaminants like dirt, black oil and other residual oils

## Why contractors prefer EDCO Scarifiers!

EDCO's Unique Engage/Disengage Lever Lets You Raise or Lower Cutting Drum without Losing Depth Setting

Your Choice of Power Sources for Use Indoors or Outdoors — Select the Horsepower You Need to Get the Job Done! Foreign Voltages Are Available.

Variable Depth Settings Provide Greater Control of Surface Removal

Built for low maintenance and easy servicing.

Heavy-Duty 7-Gauge Steel Frame

Model shown is CPM-8.

Vacuum Hookup for Dust-Free Operation (Optional on CPU-12 Model)

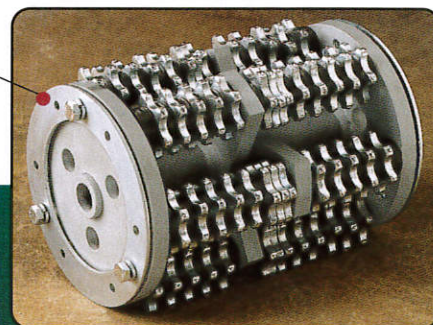
6-Shaft Drum Assembly Provides Smoother Rotation, Less Vibration and Easier Operation

## Change Drums in Minutes — No Downtime!

With EDCO's quick-change drum design and spare drum assemblies, you'll be back on the job in minutes. Our six-shaft drum assembly holds more cutters per loading for added grinding action, a more uniform surface texture and fewer drum changes.

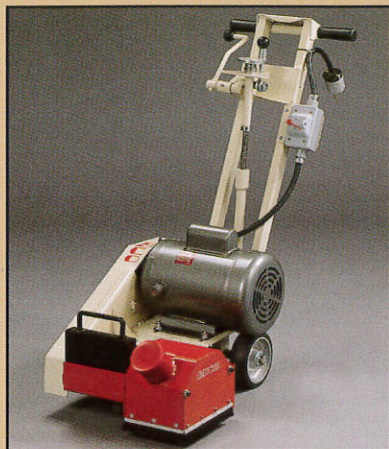
With EDCO Scarifiers, you can choose from a variety of accessories and cutters to achieve the profile, depth and speed you need for each job.

- Tungsten carbide cutters
- Diamond grooving heads
- Hardened-steel cutters





## CPM-4 Edger



## CPM-8



### Push Models

- Up to 4" working width (13 cm)
- Up to 1/16" working depth per pass (2 mm)
- Grinds within 3/4" of vertical surfaces (19 mm)
- Lightweight for easy transport and maneuverability
- Economical

#### Ideal for

- Removing traffic lines from warehouse floors
- Working around stationary equipment
- Small, narrow areas or edges

#### Performance

- 350-500 square feet per hour - (33-46 sq m/hr) at a depth of 1/16" (2 mm)
- Removes traffic lines at 800-1,000 lineal feet per hour (243-305 lineal m/hr)

Carbide and  
steel cutters  
available for all  
models and  
applications



- Up to 8" working width (20 cm)
- Up to 1/8" working depth per pass (3 mm)
- Power source directly over drum to eliminate vibration and maximize surface contact
- Compact design
- Front-mounted lifting handle makes loading and unloading easy

#### Ideal for

- Sidewalk repair
- Coating removal
- Floor preparation or cleaning
- Creating nonslip surfaces
- Traffic line removal

#### Performance

- 350-500 square feet per hour (33-46 sq m/hr) at 1/8" depth (3 mm)



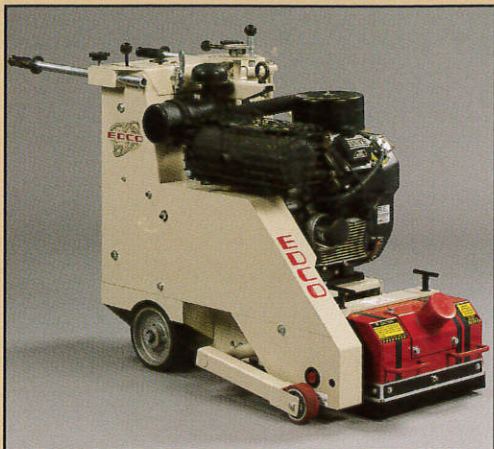
*Optional edger attachment allows the CPM-8 to work within 3/4" (19mm) of vertical surfaces or close to the edge of platforms and road surfaces*

**EDCO** Scarifiers

Any questions? Call EDCO! 1-800-638-3326 or 301-663-1600 Fax: 1-800-447-3326 or 301-663-1607



## CPU-10(-C)



## CPU-12



### Self-Propelled Models

- Up to 10" working width (25 cm)
- Adjustable depth control allows scarifying from zero to  $\frac{3}{16}$ " working depth per pass (5 mm)
- Upcut drum rotation and heavyweight construction increases production and lifts even the toughest floor coatings
- Hydrostatic transmission with forward and reverse drive provides smooth speed changes and less operator fatigue
- Includes lifting bail, oil alert and hour meter
- *Optional outrigger axle enables the CPU-10(-C) to follow slab contours closely when working on uneven surfaces, or when uniform surface removal is critical*

#### Ideal for

- Parking deck repairs
- Road repair
- Factory floor preparation or cleaning
- Repairing mall floors

#### Performance

- 500-750 square feet per hour (46-70 sq m/hr) at  $\frac{1}{8}$ " depth (3 mm)

- Widest working width — up to 12" (30 cm)
- Adjustable to  $\frac{1}{4}$ " working depth per pass (6 mm)
- Accommodates EDCO's largest cutters for longer life and more removal
- Upcut drum rotation and heavyweight construction provide faster milling action and more uniform surface texture
- Hydrostatic transmission with forward and reverse drive propels the unit smoothly for highest production and reduced operator fatigue
- Hydraulic-powered engage/disengage lever lowers or raises cutter drum from surface

#### Ideal for

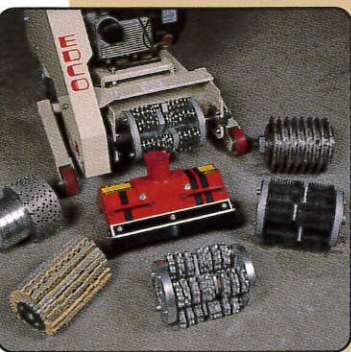
- Planing concrete, asphalt, epoxies, elastomerics and masterplate floors with ease
- High production use in industrial plants, malls, dairy barns, roads or warehouses

#### Performance

- 1,250-1,500 square feet per hour (116-139 sq m/hr) at  $\frac{1}{8}$ " depth (3 mm)

#### Special Features

- Outrigger front wheel assembly enables the CPU-12 to follow slab contours for uniform surface removal
- Cam-operated fifth wheel allows the operator to change direction or reposition the machine while the engine is still running
- Fine water mist attachment for dust control
- Includes lifting bail, oil alert and hour meter



Scarifiers **EDCO**



# Scarifier Specification Chart

	CPM-4	CPM-8	CPU-10	CPU-10-C	CPU-12
<b>Working Width</b> Steel or Carbide Cutters Diamond Blades	4" (10 cm) Variable 5 1/2" (14 cm)	8" (20 cm) Variable 7 1/2" (19 cm)	10" (25 cm) N/A N/A	8" (20 cm) Variable to 8"	12" (30 cm) N/A N/A
<b>Drum Assembly</b>	Interchangeable	Interchangeable	Permanent	Interchangeable	Permanent
<b>Number of Cutter Shafts/Drum</b>	6	6	4 or 6	4 or 6	6
<b>Drum Rotation</b>	Upcut (counterclockwise)	Downcut (clockwise)	Upcut (counterclockwise)	Upcut (counterclockwise)	Upcut (counterclockwise)
<b>Working Depth (per pass)*</b>	Adjustable to 1/16" (2 mm)	Adjustable to 1/8" (3 mm)	Adjustable to 3/16" (5 mm)	Adjustable to 3/16" (5 mm)	Adjustable to 1/4" (6 mm)
<b>Power Drive</b>	Manual	Manual	Self-Propelled	Self-Propelled	Self-Propelled
<b>Engage/Disengage Drum Lever</b>	Manual	Manual	Manual	Manual	Electric, Hydraulic
<b>Depth Control</b>	Yes	Yes	Yes	Yes	Yes
<b>Vacuum Hookup</b>	3" (8 cm)	2" (5 cm)	3" (8 cm)	3" (8 cm)	3" (8 cm)
<b>Power Options</b>	5 HP Gasoline 2 HP Electric 5 HP Electric 5 HP Air	9 HP Gasoline 5 HP Electric	12-20 HP Gasoline 10 HP Electric	12-20 HP Gasoline 10 HP Electric	35 HP Gasoline 15 HP Electric
<b>Dimensions</b> Length Width Height Weight (approx.)	38" (97 cm) 18" (46 cm) 38" (97 cm) 174 lb (79 kg)	38" (97 cm) 19" (48 cm) 39" (99 cm) 202 lb (92 kg)	45" (114 cm) 24" (61 cm) 38" (97 cm) 565 lb (256 kg)	45" (114 cm) 24" (61 cm) 38" (97 cm) 565 lb (256 kg)	53" (135 cm) 36" (91 cm) 43" (109 cm) 1,000 lb (454 kg)

\*Actual depth will depend on accessory used and hardness of surface.

Export models available.

**Any questions? Call **EDCO****

**1-800-638-3326 or 301-663-1600**

**Fax: 1-800-447-3326 or 301-663-1607**

**email: [sales@edcoinc.com](mailto:sales@edcoinc.com) Website: [www.edcoinc.com](http://www.edcoinc.com)**

**Equipment Development Co., Inc. • 100 Thomas Johnson Drive • Frederick, MD 21702-4600**

**EDCO Scarifiers**